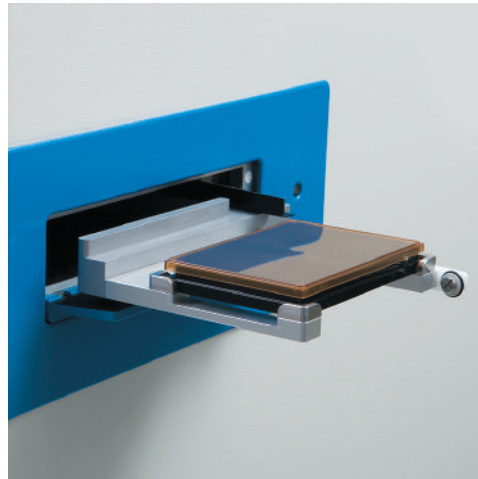
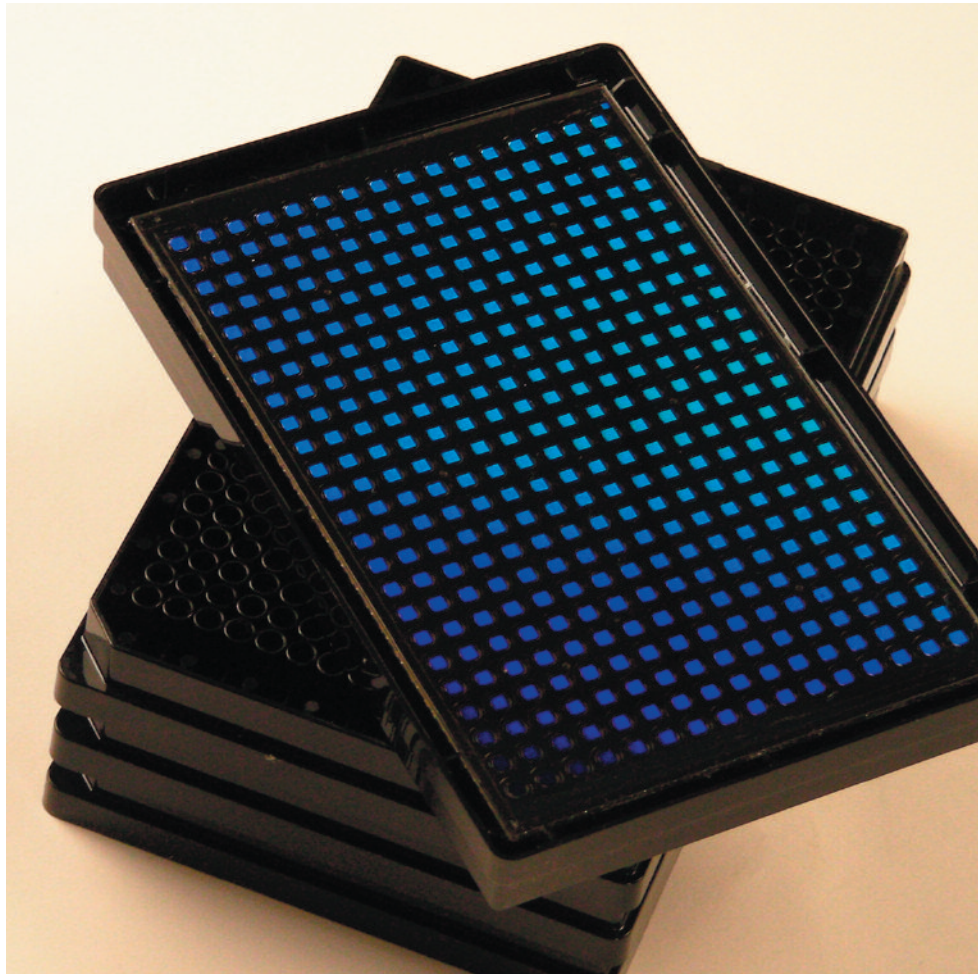


Corning® Epic® 384 Well Fibronectin-Coated Cell Assay Microplate

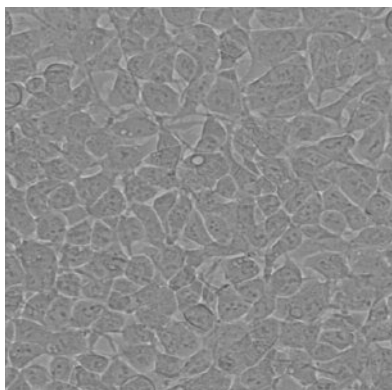
The Corning Epic 384 well Fibronectin-Coated Cell Assay Microplate is an SBS-standard 384 well microplate with optical biosensors integrated in each well and has been designed for use in the Corning Epic System for high-throughput label-free detection. The surface of each Epic Fibronectin-Coated Cell Assay Microplate enables attachment and the growth of weakly adherent cells, including native cells, recombinant/engineered cell lines, and primary cells.



CORNING

Epic[®]
technology

Corning® Epic® 384 Well Fibronectin-Coated Cell Assay Microplate



Typical morphology of HEK293 Cells on an Epic Fibronectin-Coated Cell Assay Microplate.

Epic Cell Assay Applications

- ▶ High-throughput screening
- ▶ Pharmacological profiling studies
- ▶ GPCR pathway identification and validation
- ▶ Endogenous receptor modulation
- ▶ Orphan receptor studies
- ▶ Cell proliferation assays
- ▶ ADME/Tox studies

Examples of Cell Lines Tested

- ▶ HEK293 cells
- ▶ Engineered CHO cells
- ▶ Primary cells

Quality Control

- ▶ Each well factory tested for resonant wavelength
- ▶ Tested for ability to promote and stabilize attachment and spreading of HEK293 cells
- ▶ Fibronectin pre-tested and found negative for bacteria and fungi
- ▶ Functionally tested for assay performance

Operating Parameters

Assay volume:	25-50 µL typical
Maximum well volume:	82 µL
Typical seeding density:	5,000-20,000 cells/well
Storage conditions:	Store at 2-8°C (Do not freeze.)

Ordering Information

Cat. No.	Description	Qty/Pk	Qty/Cs
5042	Epic Fibronectin-Coated Cell Assay Microplate	1 plate/pk	10 pk/cs

CORNING

Corning Incorporated Life Sciences

Tower 2, 4th Floor
900 Chelmsford St.
Lowell, MA 01851
t 800.492.1110
t 978.442.2200
f 978.442.2476

www.corning.com/lifesciences

Worldwide Support Offices

ASIA / PACIFIC

Australia/New Zealand
t 0402-794-347

China
t 86 21 2215 2888
f 86 21 6215 2988

India
t 91 124 4604000
f 91 124 4604099

Japan

t 81 3-3586 1996
f 81 3-3586 1291

Korea

t 82 2-796-9500
f 82 2-796-9300

Singapore

t 65 6733-6511
f 65 6861-2913

Taiwan

t 886 2-2716-0338
f 886 2-2516-7500

EUROPE

France

t 0800 916 882
f 0800 918 636

Germany

t 0800 101 1153
f 0800 101 2427

The Netherlands

t 31 20 655 79 28
f 31 20 659 76 73

United Kingdom

t 0800 376 8660
f 0800 279 1117

All Other European Countries

t 31 (0) 20 659 60 51
f 31 (0) 20 659 76 73

LATIN AMERICA

Brasil

t (55-11) 3089-7419
f (55-11) 3167-0700

Mexico

t (52-81) 8158-8400
f (52-81) 8313-8589