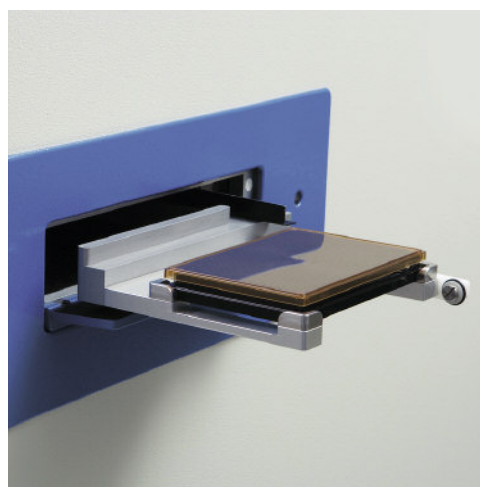
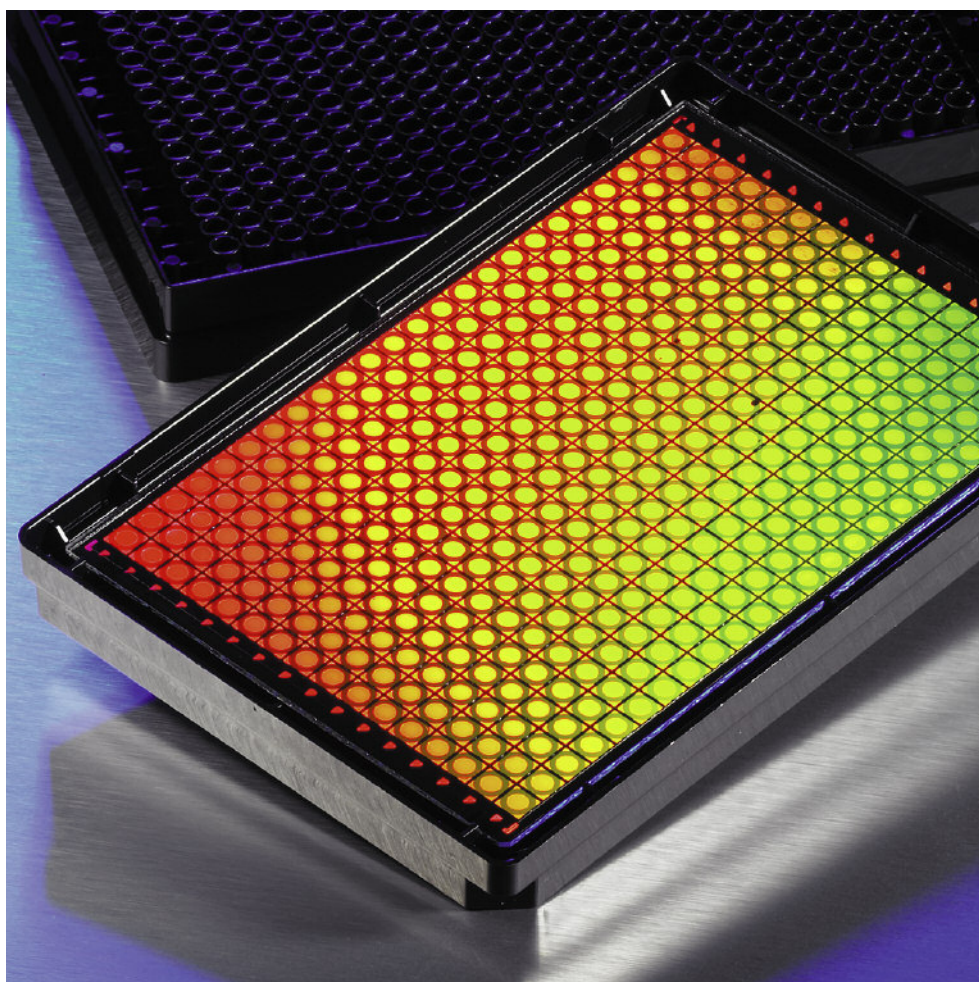


Corning® Epic® 384 Well Cell Assay Microplate

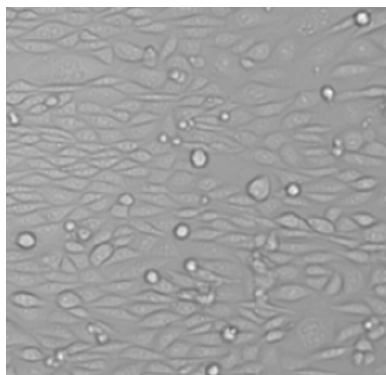
The Corning Epic 384 Well Cell Assay Microplate is an SBS-standard 384 well microplate with an optical biosensor integrated into each well and is an integral component of the Epic System for high-throughput label-free detection. The surface of each Epic Cell Assay Microplate is tissue culture compatible and enables the attachment and normal growth of adherent cells, including native cells, recombinant/engineered cell lines, and primary cells.



CORNING

Epic[®]
technology

Corning® Epic® 384 Well Cell Assay Microplate



Typical Morphology of CHO-M1 Cells on an Epic Cell Assay Microplate

Epic Cell Assay Applications

- ▶ High-throughput screening
- ▶ Pharmacological profiling studies
- ▶ GPCR pathway identification and validation
- ▶ Endogenous receptor modulation
- ▶ Orphan receptor studies
- ▶ Cell proliferation assays
- ▶ ADME/Tox studies

Examples of Cell Lines Tested

- ▶ CHO-M1, CHO-K1, CHO-KCNQ cells
- ▶ HeLa cells
- ▶ RMS 13 cells
- ▶ Cos 7 cells
- ▶ A431 cells

Quality Control

- ▶ Each well factory tested for resonant wavelength
- ▶ Tested for growth and morphology of CHO-M1 cells
- ▶ Functionally tested for assay performance
- ▶ Sterile

Operating Parameters

Assay volume	25-50 µL typical
Maximum well volume	82 µL
Typical seeding density	5,000-20,000 cells/well
Storage conditions	Room temperature

Ordering Information

Cat. No.	Description	Qty/Pk	Qty/Cs
5040	Epic Cell Assay Microplate	1 plate/pk	10 pk/cs

CORNING

Corning Incorporated Life Sciences

Tower 2, 4th Floor
900 Chelmsford St.
Lowell, MA 01851
t 800.492.1110
t 978.442.2200
f 978.442.2476

www.corning.com/lifesciences

Worldwide Support Offices

ASIA / PACIFIC

Australia/New Zealand
t 0402-794-347

China
t 86 21 2215 2888
f 86 21 6215 2988

India
t 91 124 4604000
f 91 124 4604099

Japan
t 81 3-3586 1996
f 81 3-3586 1291

Korea
t 82 2-796-9500
f 82 2-796-9300

Singapore
t 65 6733-6511
f 65 6861-2913

Taiwan
t 886 2-2716-0338
f 886 2-2716-0339

EUROPE

France
t 0800 916 882
f 0800 918 636

Germany
t 0800 101 1153
f 0800 101 2427

The Netherlands
t 31 20 655 79 28
f 31 20 659 76 73

United Kingdom
t 0800 376 8660
f 0800 279 1117

All Other European Countries

t 31 (0) 20 659 60 51
f 31 (0) 20 659 76 73

LATIN AMERICA

Brasil
t (55-11) 3089-7419
f (55-11) 3167-0700

Mexico
t (52-81) 8158-8400
f (52-81) 8313-8589