

LANscape® Pretium® Evolved-Density, Growth-Enabled (EDGE) Solutions

A LANscape® Pretium® Solutions Product

features and benefits |

Revolutionary drawer-style hardware	Offers unprecedented finger access while achieving the highest port density in the market
High-density trunk cables	Allow tighter trunk cable bends for slack storage and routing
Low insertion loss performance	Allows for more connections in a link when deploying a TIA-942-compliant system
Custom engineered harness assemblies	Allow seamless integration into the most common SAN directors
Connector modules	Allow for fiber modularity while offering both front and rear loading capability
Shuttered modules	Create one-hand operation while eliminating need to keep up with dust caps
Universal wired components	Enable moves, adds and changes without polarity concerns; provide a simple migration path between 2-fiber and parallel optic applications
Factory-terminated solutions	Provide consistent quality, ensure system performance and reduce installation time

Corning Cable Systems LANscape® Pretium® Evolved-Density, Growth-Enabled (EDGE) Solutions are high-density preterminated optical cabling solutions that simplify installation and improve performance in the data center environment. Pretium EDGE Solutions, a complement to the Plug & Play™ Systems product family, provide increased system density when compared to traditional preterminated systems and offer the highest port density in the market. Custom-engineered components enable simple integration into common SAN directors, while the preterminated components allow for reduced installation time and faster moves, adds and changes (MACs).

Corning Cable Systems' factory-terminated solutions provide improved system performance, ensure component compatibility and yield consistent quality. Pretium EDGE Solutions consist of optical trunks and extender trunks, modules, harnesses, housings and jumpers. Enabled by reduced cable diameters and Corning® ClearCurve® optical fiber, the trunks and extender trunks have an

(continued)



Pretium EDGE Solutions | Photo LAN1740



LANscape® Pretium® Evolved-Density, Growth-Enabled (EDGE) Solutions

A LANscape® Pretium® Solutions Product

innovative pulling grip to increase the speed of deployment while offering superior protection of the assembly. Trunk furcation integrates inside of the hardware to create a rapid one-hand strain-relief system.

The universal wired modular system components enable fast and simple networking moves, adds and changes with none of the polarity concerns associated with special polarity-compensating components.

Installing the System

There is no time-consuming fiber preparation and termination as found in traditional field installations. There are no consumables or piece parts and no tools are required other than a screwdriver for installation of hardware. Zero scrap equals more accurate cost estimating, and system performance is guaranteed.

Preterminated trunk cabling systems constructed with a factory-installed protective pulling grip are routed through the cabling pathways and spaces.

Once deployed, the pulling grip is removed and the exposed connectors on both ends are plugged into patch panels or system equipment. High-density MTP® Connector-based trunk systems plug into break-out modules or harnesses for a simple, fast, modular solution with easy scalability. Modules and harnesses conveniently load into Pretium® EDGE Solutions hardware, and correct fiber polarity is guaranteed throughout the systems' link.

With Corning Cable Systems LANscape® Pretium EDGE Solutions, there are only four steps required to install the optical network:

1. Pull the cable assembly
2. Mount the hardware
3. Plug in the connectors
4. Test the system

Pretium EDGE Solutions products are packaged in up to 60 percent recycled material, and the packaging is 100 percent recyclable.

specifications |

Insertion Loss (dB) Max			
	Ultra-Bendable Single-Mode Optical Fiber (OS2)	Pretium 300 Solutions with Corning® ClearCurve® Optical Fiber (OM3)	Pretium 550 Solutions with ClearCurve Optical Fiber (OM4)
Connected Mated Pairs			
LC	0.5	0.15	0.15
MTP Connector	0.75	0.35	0.35
Modules/Harnesses			
LC	1.3	0.5	0.5

LANscape® Pretium® Evolved-Density, Growth-Enabled (EDGE) Solutions

A LANscape® Pretium® Solutions Product

Pretium® EDGE Solutions Trunk Cables

Pretium EDGE Solutions trunk cables utilize the MTP® Connector, a 12-fiber push/pull optical connector with a footprint similar to the SC simplex connector. These high-density connectors are used to significantly accelerate the network installation process, minimize errors and reduce space. LANscape® Pretium EDGE Solutions trunks utilizing MTP Connectors support 12 to 144 fibers.

Pretium EDGE Solutions trunk cables utilize a high-density cable solution, which results in up to 65 percent space savings. Five to six times the fiber tray capacity can be achieved over traditional bulkier cabling solutions while minimizing cable tray weight and cooling air impediment. The trunk cables contain Corning® ClearCurve® optical fiber, which enables a bend radius of five times the cable outside diameter and allows for smaller slack storage coils or loops. The cables feature a 2.9 mm round furcation leg which provides easy routing and improved slack storage.

Pretium EDGE Solutions trunks feature a furcation plug design that offers stress-free strain-relief of the cable, and a small-profile furcation plug allows installation of all fiber counts inside a 1U housing. All trunks are shipped with appropriate strain-relief brackets for integrating into both Pretium EDGE Solutions housings and Plug & Play™ Systems housings. The trunk furcation features a transition boot for smooth transition out of rack/floor hardware. The flexibility of the grip allows easy installation around the corners of tray and ladder racks, while its robust design allows the trunk to be pulled through conduit using up to 100 lb of pulling tension while providing complete protection for the connectors. All trunks are packaged on a plastic corrugated reel for easy installation. This reel can be easily broken down for cost-effective disposal.

Pretium EDGE Solutions trunks have been tested and meet the skew criteria to ensure the system is 100G Ready.



Pretium EDGE Solutions Trunk, 12-Fiber
| Photo LAN1548



Pretium EDGE Solutions Trunk, 144-Fiber
| Photo LAN1550

LANscape® Pretium® Evolved-Density, Growth-Enabled (EDGE) Solutions

A LANscape® Pretium® Solutions Product

specifications |

Cable Ratings/Listings NFPA 262, National Electrical Code® (NEC®), OFNP, CSA FT-6
ICEA S-83-596

Trunk Performance EIA/TIA 568 C.3 – includes low/high temperature soak of -10/60°C, humidity testing at 90-95% at 40°C, connector durability (500 matings), and connector pull testing

Trunk assemblies can be pulled up to 100 lb using the grip.

Fiber Count	Cable Outside Diameter (in)	Pulling Grip Outside Diameter (in)	Strain-Relief Bracket Type	Cable Weight (lb/1000 ft)	Minimum Bend Radius Loaded (in)	Minimum Bend Radius Installed (in)
12	0.17	1.6	1	14	2.6	0.9
24	0.25	1.6	1	26	3.8	1.3
36	0.28	1.6	1	30	4.1	1.4
48	0.30	2.2	2	34	4.5	1.5
72	0.39	2.2	2	66	5.8	1.9
96	0.41	2.2	2	73	6.1	2.0
144	0.45	2.2	2	87	6.8	2.3

transmission performance |

	Pretium® 300 Solutions with Corning® ClearCurve® Optical Fiber	Pretium 550 Solutions with ClearCurve Optical Fiber	Single-Mode Ultra-Bendable Fiber
Fiber Code	T	Q	G
ISO/IEC 11801 Nomenclature	OM3*	OM4*	OS2
Wavelength (nm)	850/1300	850/1300	1310/1383/1550
Maximum Attenuation (dB/km)	3.0/1.0	3.0/1.0	0.4/0.3
Minimum Effective Modal Bandwidth (MHz·km)	2000/ –	4700/ –	– / – / –

* Meets 0.75 ns optical skew at 300 m.

LANscape® Pretium® Evolved-Density, Growth-Enabled (EDGE) Solutions

A LANscape® Pretium® Solutions Product

shipping information |

Reel Capacities (ft)			
Trunk Fiber Count	Reel A Diameter = 23.5 in Width = 5 in	Reel B Diameter = 23.5 in Width = 12 in	Reel C Diameter = 23.5 in Width = 18 in
12	30-999		
24	30-999		
36	30-999		
48	30-800	801-999	
72	30-450	451-999	
96	30-400	401-999	
144	30-300	301-800	801-999

Note: Shipped in a 30 x 30 in cardboard box, or stacked on a 42 in pallet. Trunks < 30 ft are shipped in a cardboard box, not on a reel.



LANscape® Pretium® Evolved-Density, Growth-Enabled (EDGE) Solutions

A LANscape® Pretium® Solutions Product

ordering information |

Pretium® EDGE Solutions Trunk Cables

□	□ □	□ □	□ □	□	PN	D	D	U	□ □ □	F
1	2	3	4	5	6	7	8	9	10	11

|1
Select grip application.
G = Grip on first end only
D = Grip on both ends
Z = No grip

|2
Select MTP® Connector (end one or outside of reel).
Single-Mode
90 = Non-pinned
Multimode
75 = Non-pinned

|3
Select MTP Connector (end two or inside of reel).
Single-Mode
90 = Non-pinned
Multimode
75 = Non-pinned

|4
Select standard fiber count.
12 = 12 fibers
24 = 24 fibers
36 = 36 fibers
48 = 48 fibers
72 = 72 fibers
96 = 96 fibers
E4 = 144 fibers

|5
Select fiber type.
T = 50/125 μm multimode (OM3), Pretium 300 Solutions with Corning® ClearCurve® fiber (standard)
Q = 50/125 μm multimode (OM4), Pretium 550 Solutions with ClearCurve fiber
G = Single-mode ultra-bendable fiber (OS2)

|6
Defines cable type.
PN = Plenum, non-armored

|7
Defines leg length on end one or outside of reel.
D = 33 in (+3/-0 in)
See Note 1.

|8
Defines leg length on end two or inside of reel.
D = 33 in (+3/-0 in)

|9
Defines trunk type.
U = Standard universal MTP to MTP Connector trunk

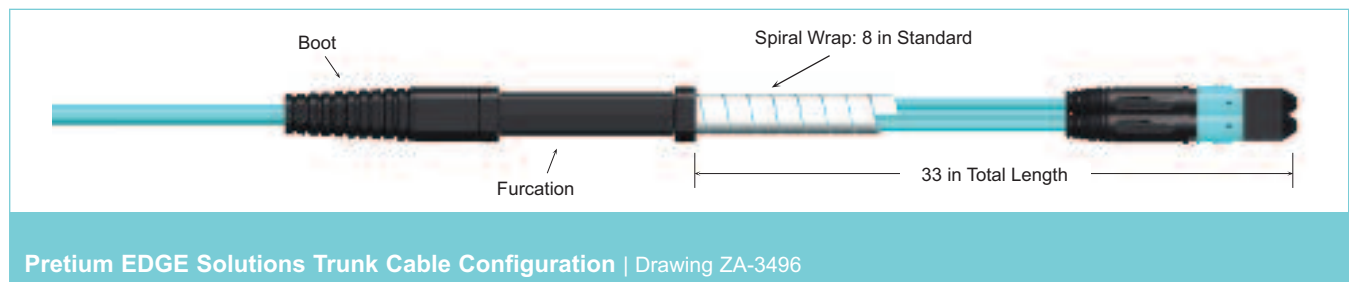
|10
Select cable length (measured from furcation plug to furcation plug).
030, 040, 050, 060, 070, 080, 090, 100, 110, 120, 130, 140, 150, 160, 170, 180, 190, 200
See Note 2.

|11
Defines unit of measure.
F = Feet

Notes:
1) Furcation legs and jacket are color-coded by fiber type:
T and Q = Aqua
G = Yellow

2) Other cable lengths available upon request. Cable tolerance from plug to plug is -0/+2 ft.

3) All trunks are shipped with both the keyhole and U-clip style strain-relief bracket.



Pretium EDGE Solutions Trunk Cable Configuration | Drawing ZA-3496

Note: Spiral wrap used on 12- to 36-fiber trunks only.

LANscape® Pretium® Evolved-Density, Growth-Enabled (EDGE) Solutions

A LANscape® Pretium® Solutions Product

Pretium® EDGE Solutions Extender Trunks

Pretium EDGE Solutions extender trunks are used to extend the Pretium EDGE Solutions trunk cables from a zone consolidation area. For example, a high-fiber-count trunk can be deployed from a main distribution area (MDA) to a zone distribution area (ZDA). Smaller-fiber-count extender trunks can then be utilized to distribute fiber into multiple cabinets within a row.

Extender trunks are manufactured with pinned MTP® Connectors on one end of the cable trunk and non-pinned MTP Connectors on the other end. The pinned MTP Connectors mate with the non-pinned connectors of the Pretium EDGE Solutions trunk and the non-pinned MTP Connectors are plugged into the Pretium EDGE Solutions module or harness.



Pretium EDGE Solutions Trunk Cradle Brackets (for integration into hardware) | Photo LAN1544



Pretium EDGE Solutions Trunk Integration | Photo LAN1748

LANscape® Pretium® Evolved-Density, Growth-Enabled (EDGE) Solutions

A LANscape® Pretium® Solutions Product

ordering information |

Pretium® EDGE Solutions Extender Trunks

<input type="checkbox"/>	<input type="checkbox"/> <input type="checkbox"/>	<input type="checkbox"/> <input type="checkbox"/>	<input type="checkbox"/> <input type="checkbox"/>	<input type="checkbox"/>	PN	C	D	X	<input type="checkbox"/> <input type="checkbox"/> <input type="checkbox"/>	F
1	2	3	4	5	6	7	8	9	10	11

|1

Select grip application.
 G = Grip on first end only
 D = Grip on both ends
 Z = No grip

|2

Select MTP® Connector (end one or outside of reel).
Single-Mode
 89 = Pinned
Multimode
 93 = Pinned
 See Note 1.

|3

Select MTP Connector (end two or inside of reel).
Single-Mode
 90 = Non-pinned
Multimode
 75 = Non-pinned
 See Note 1.

|4

Select standard fiber count.
 12 = 12 fibers
 24 = 24 fibers
 36 = 36 fibers
 48 = 48 fibers
 72 = 72 fibers
 96 = 96 fibers
 E4 = 144 fibers

|5

Select fiber type.
 T = 50/125 µm multimode (OM3), Pretium 300 Solutions with Corning® ClearCurve® fiber (standard)
 Q = 50/125 µm multimode (OM4), Pretium 550 Solutions with ClearCurve fiber
 G = Single-mode ultra-bendable fiber (OS2)

|6

Defines cable type.
 PN = Plenum, non-armored

|7

Defines leg length on end one or outside of reel.
 C = 60 in (+3/-0 in)
 See Note 2.

|8

Defines leg length on end two or inside of reel.
 D = 33 in (+3/-0 in)
 See Note 2.

|9

Defines trunk type.
 X = Universal extender MTP to MTP trunk

|10

Select cable length (measured from furcation plug to furcation plug).
 030, 040, 050, 060, 070, 080, 090, 100, 110, 120, 130, 140, 150, 160, 170, 180, 190, 200
 See Note 3.

|11

Defines unit of measure.
 F = Feet

Notes:

1) Extender trunks have pinned MTP Connectors on one end and non-pinned MTP Connectors on the other end. Alignment of the MTP Connector is achieved when mating a pinned MTP Connector to a non-pinned MTP Connector. Attempting to mate two pinned MTP Connectors or two non-pinned MTP Connectors will not produce the desired optical performance.

2) Furcation legs and cable jackets are color-coded by fiber type:
 T and Q = Aqua
 G = Yellow

3) Other cable lengths available upon request. Cable tolerance from plug to plug is -0/+2 ft.

4) All trunks are shipped with both the keyhole and U-clip style strain-relief bracket.

LANscape® Pretium® Evolved-Density, Growth-Enabled (EDGE) Solutions

A LANscape® Pretium® Solutions Product

Pretium® EDGE Solutions Modules

Pretium EDGE Solutions modules are used to break out the 12-fiber MTP® Connectors terminated on trunk cables into LC connectors to facilitate patching into system equipment ports or patch panels. The 12-fiber module features LC port adapters across the front and an MTP Connector adapter in the back. A factory-terminated and -tested optical fiber assembly inside the module connects the front adapters to the back MTP Connector adapter.

Pretium EDGE Solutions modules are housed at the front of the housing and may be installed or removed from either the front or rear. This results in faster installation by allowing a technician to strain-relieve the trunk, route trunk legs, plug the MTP Connector into the module and install the module into the housing all from one side of the cabinet row. The modular design allows for a pay-as-you-grow approach to network installation. The module features an LC shuttered adapter, so there is no need for dust caps that can

be lost. Unlike other shuttered adapters on the market, this adapter is VFL compatible. The innovative design diffuses the red VFL light, allowing easy visualization of port identification without needing to manually open each shutter. This revolutionary inward opening design also allows for a single-hand LC duplex operation, while its concave shutter door ensures there is no contact with the connector end-face during installation.

The use of Pretium EDGE Solutions modules in the data center offers the advantage of greater manageability and flexibility with a modular infrastructure. As future connectivity requirements change, modules can be easily exchanged to meet those needs, while leaving the existing trunk cable infrastructure in place. The MTP Connector backplane allows for future upgradeability to parallel optics. Pretium EDGE Solutions modules are packaged in an easy-open plastic container to facilitate bulk packaging for reduced waste during data center installation.



Pretium EDGE Solutions Module | Photo LAN1542



VFL-Compatible Shutter | Photo LAN1545

LANscape® Pretium® Evolved-Density, Growth-Enabled (EDGE) Solutions

A LANscape® Pretium® Solutions Product

ordering information |

Pretium® EDGE Solutions Modules

ECM - UM12 -	<input type="checkbox"/> <input type="checkbox"/>	-	<input type="checkbox"/> <input type="checkbox"/>	<input type="checkbox"/>
	1		2	3

|1
 Select adapters on module front.
LC Duplex
 05 = Multimode
 04 = Single-mode
 See Note 1.

|2
 Select adapters on module back.
 93 = MTP® (pinned), multimode
 89 = MTP (pinned), single-mode
 See Note 2.

|3
 Select fiber type.
 T = 50/125 μm multimode (OM3), Pretium 300 Solutions with Corning® ClearCurve® fiber
 Q = 50/125 μm multimode (OM4), Pretium 550 Solutions with ClearCurve fiber
 G = Single-mode ultra-bendable fiber (OS2)

Notes:
 1) Multimode adapter is aqua, single-mode adapter is blue.
 2) Multimode MTP adapter is aqua, single-mode is black.

shipping information |

Quantity	Weight (lb)	Dimensions (in)
4	1.2	5 x 3.25 x 7.5
12	3.2	5 x 9.5 x 7.5



Pretium EDGE Solutions Module in Easy-Open Plastic Packaging | Photo LAN1543

LANscape® Pretium® Evolved-Density, Growth-Enabled (EDGE) Solutions

A LANscape® Pretium® Solutions Product

Pretium® EDGE Solutions Harnesses

Pretium EDGE Solutions harnesses are used to break out the 12-fiber MTP® Connectors terminated on trunk cables into LC connectors. With a pinned MTP Connector on one end that connects to a Pretium EDGE Solutions trunk, the other end is equipped with LC-style uniboot connectors, which plug into electronic ports. The use of harnesses provides a solution that occupies less space than traditional jumpers, as the cable end of the harness is much smaller than the six equivalent patch cords. This reduced cabling bulk improves airflow for increased cooling and facilitates easier moves, adds and changes (MACs).

Utilizing 12-fiber MTP and LC uniboot connector technology, Pretium EDGE Solutions harnesses reduce cable congestion in front of the SAN director for easy

MACs. The harnesses feature a custom-engineered taper to match the port pitch in the electronics to provide seamless integration between the cabling infrastructure and electronics. Furcation plugs can be snapped together to maximize harness organization in front of the electronic ports, and they contain an integrated Velcro strap hoop to improve the cabling aesthetics of even the densest SAN directors.

Pretium EDGE Solutions harnesses are available in two lengths. Short harnesses allow for minimal cable slack when placing the electronics adjacent to the housing containing the MTP Connector interconnect panels. Longer harness legs allow flexibility to mount the hardware and electronics anywhere within the same cabinet, and the MTP Connector leg slack can be stored in the vertical manager.



Pretium EDGE Solutions Harness | Photo LAN1554

LANscape® Pretium® Evolved-Density, Growth-Enabled (EDGE) Solutions

A LANscape® Pretium® Solutions Product

ordering information |

Pretium® EDGE Solutions Harnesses

H	□ □	□ □	12	□	PH	-	□	Z	□ □ □	F
1	2	3	4	5	6	7	8			

|1

Select MTP® Connector.
93 = Multimode, pinned,
89 = Single-mode, pinned

|2

Select the break-out connector type.
LC Duplex, Uniboot
79 = Multimode
78 = Single-mode

|3

Select fiber type.
T = 50/125 µm multimode (OM3), Pretium 300 Solutions with Corning® ClearCurve® fiber
Q = 50/125 µm multimode (OM4), Pretium 550 Solutions with ClearCurve fiber
G = Single-mode ultra-bendable fiber (OS2)

|4

Defines cable type.
PH = Plenum harness

|5

Select LC stagger.
1 = Cisco MDS 9513, 9509 and 9506 stagger
2 = Brocade 48000, DCX and DCX-4S stagger
3 = Cisco Nexus 7010 and 7018 stagger
4 = Uniform LC legs of 6 in

|6

Defines harness type.
Z = Universal wired harness

|7

Select harness length.
007 = Short harness for adjacent mounting of hardware and SAN Director
010 = Long harness for flexible mounting options within cabinet
See Note 1.

|8

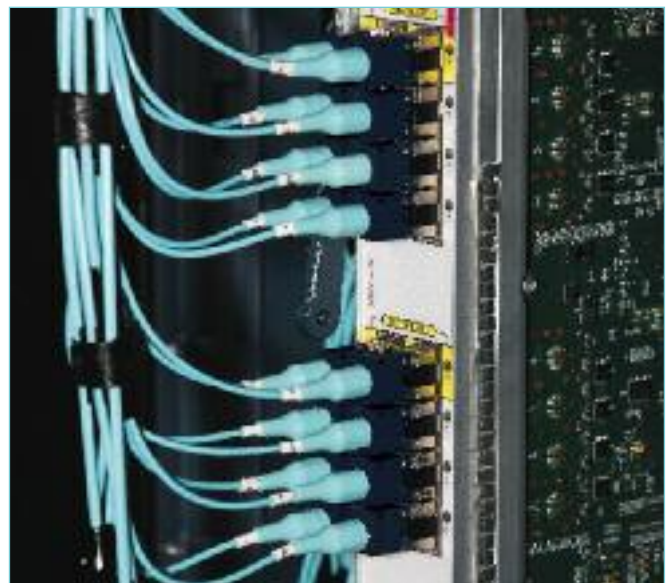
Defines unit of measure.
F = Feet

Note:

1) Harness length is measured from MTP Connector to furcation plug, thus excludes LC leg length.



Pretium EDGE Solutions Harnesses Installed in Electronics | Photo LAN1536



Pretium EDGE Solutions Harnesses | Photo LAN1533

LANscape® Pretium® Evolved-Density, Growth-Enabled (EDGE) Solutions

A LANscape® Pretium® Solutions Product

Pretium® EDGE Solutions MTP® Connector Panels

Corning Cable Systems Pretium EDGE Solutions MTP® Connector panels are used to provide a convenient interconnect point between the trunk cables and harness.

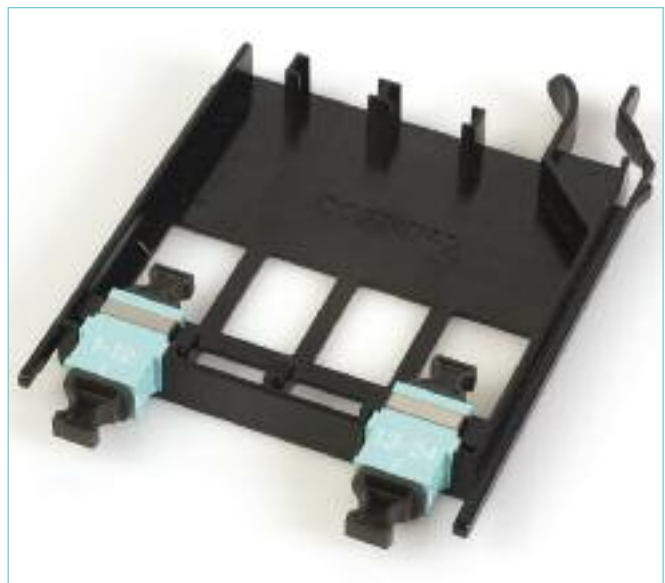
Pretium EDGE Solutions MTP Connector panels are housed within the front of the 1U or 4U housings.

The panels may be installed or removed from either the front or rear direction. The MTP Connector back-plane allows for future upgradeability to parallel optics.

Pretium EDGE Solutions MTP Connector panels are packaged in a recyclable, easy-open plastic container to facilitate bulk packaging for reduced waste during data center installation.



Pretium EDGE Solutions MTP Connector Panel Installed in Housing | Photo LAN1694



Pretium EDGE Solutions MTP Connector Panel | Photo LAN1546

ordering information |

Pretium EDGE Solutions MTP Connector Panels

Part Number	Description
EDGE-CP24-E3	24-fiber MTP Connector Panel, aqua adapter for Pretium 300 or 550 Solutions
EDGE-CP24-90	24-fiber MTP Connector Panel, black adapter for ultra-bendable single-mode solutions
EDGE-CP48-E3	48-fiber MTP Connector Panel, aqua adapter for Pretium 300 or 550 Solutions
EDGE-CP48-90	48-fiber MTP Connector Panel, black adapter for ultra-bendable single-mode solutions

LANscape® Pretium® Evolved-Density, Growth-Enabled (EDGE) Solutions

A LANscape® Pretium® Solutions Product

Pretium® EDGE Solutions Housings

Pretium EDGE Solutions housings are available in both 1U and 4U sizes and mount in 19-in racks or cabinets. Combined with Pretium EDGE Solutions trunks, modules and jumpers, they provide industry-leading high-density connectivity, with a port density of 576 fibers within a single 4U housing.

In the main distribution area, the Pretium EDGE Solutions housing provides a cross-connect for first level backbone cables, entrance cables and equipment cables. In the equipment distribution area, the housing is an interconnect to system equipment (such as SAN switches, servers and IP switches). The housing also accommodates the mixing and matching of multiple Pretium EDGE Solutions modules and panels within one chassis.

The Pretium EDGE Solutions 4U housing contains 12 individually sliding trays that can accommodate as many as four 12-fiber modules per tray, resulting in improved finger access to connectors and allowing for individual access without compromising the optical connectivity of other ports.

Front jumper management guides on each tray allow for jumpers to be routed to the left or right. External jumper routing guides facilitate proper slack management to ensure drawer movement.

Industry-leading port labeling is available on the rear side of the housing's front door, and each housing includes mounting plug receptacle areas at the rear, which enable fast and easy installation and strain-relief of Pretium EDGE Solutions trunk cables. Brush cable entry makes trunk entry quick and easy.



Pretium EDGE Solutions, 4U Housing (closed)
| Photo LAN1564



Rear View of Pretium EDGE Solutions, 4U Housing
| Photo LAN1745



Pretium EDGE Solutions, 1U Housing (open) | Photo LAN1693

LANscape® Pretium® Evolved-Density, Growth-Enabled (EDGE) Solutions

A LANscape® Pretium® Solutions Product

specifications |

Part Number	Depth (in)	Minimum Cabinet Size (mm)	Module Capacity	Trunk Capacity
EDGE-01U	21.95	600	8	8 (size 1 or 2)
EDGE-04U	24.60	800	48	24 (size 1 or 2) 48 (size 1 double stack)

Shipping Information

	Box Dimensions (in)	Shipped Weight (lb)
EDGE-01U	20.28 x 7.81 x 27	16
EDGE-04U	25 x 13.75 x 31.25	34

ordering information |

Pretium® EDGE Solutions Housings

Part Number	Description
EDGE-04U	4U Pretium EDGE Solutions Housing, rack mount
EDGE-01U	1U Pretium EDGE Solutions Housing, rack mount

Accessories

EDGE-STRN1-10	Replacement Pretium EDGE Solutions Trunk Keyhole Strain-Relief Bracket for size 1 (12- to 36-fiber MTP® Connector trunks), 10 pack
EDGE-STRN2-10	Replacement Pretium EDGE Solutions Trunk Keyhole Strain-Relief Bracket for size 2 (48- to 144-fiber MTP Connector trunks), 10 pack
EDGE-DBLSTRN1-10	Double-Stack Pretium EDGE Solutions Trunk Strain-Relief Bracket for size 1 (12- to 36-fiber MTP Connector trunks), each bracket holds 2 trunks, 10 pack
EDGE-CLIP-1-10	Replacement Pretium EDGE Solutions Trunk U-Clip Strain-Relief Bracket for size 1 (12- to 36-fiber MTP Connector trunks allow integration into traditional Plug & Play™ Systems housings), 10 pack
EDGE-CLIP-2-10	Replacement Pretium EDGE Solutions Trunk U-Clip Strain-Relief Bracket for size 2 (48- to 144-fiber MTP Connector trunks allow integration into traditional Plug & Play Systems housings), 10 pack
2104466-01	MTP Connector and Port Cleaning Tool
CLEANER-PORT-LC	LC Connector and Port Cleaning Tool
EDGE-RLB-WT	Pretium EDGE Solutions Installation Kit for wire cable tray; allows for installation of EDGE-04U or EDGE-01U secured to a wire cable tray

LANscape® Pretium® Evolved-Density, Growth-Enabled (EDGE) Solutions

A LANscape® Pretium® Solutions Product

Pretium® EDGE Solutions Jumpers

Pretium EDGE Solutions jumpers are integrated uniboot duplex assemblies that meet the high-density space requirements of the MDA and EDA and provide a 50 percent reduction in bulk cabling when compared to traditional duplex jumpers. The highly flexible, 2-fiber interconnect cable reduces cable congestion, improves jumper management and routing and improves air circulation.

Enabled by Corning® ClearCurve® multimode optical fiber, Pretium EDGE Solutions jumpers feature ultra-bendable performance and accommodate a minimum bend radius of 10 mm with minimal bend-induced attenuation loss. With this bend performance, Pretium EDGE Solutions jumpers can greatly reduce outages and degradation in systems caused by severe bending problems.

As network transmission speeds increase, available margins tighten and become more sensitive to loss associated with a number of factors, including bends. Attenuation loss impacts associated with inadvertent macrobending events may be reduced by more than 50 percent when using Pretium EDGE Solutions jumpers, and some severe bending problems that typically result in a system outage become a non-event when the jumpers are deployed.



Pretium EDGE Solutions Jumper | Photo LAN1547

ordering information |

Part Number	Description
797902TD120xxxM	2-Fiber LC Uniboot/LC Uniboot Multimode Pretium EDGE Solutions Low-Loss Jumper, OFNR (riser) 2.0 mm interconnect cable, Pretium 300 Solutions with Corning ClearCurve optical fiber (OM3)
797902QD120xxxM	2-Fiber LC Uniboot/LC Uniboot Multimode Pretium EDGE Solutions Low-Loss Jumper, OFNR (riser) 2.0 mm interconnect cable, Pretium 550 Solutions with Corning ClearCurve optical fiber (OM4)
787802GD120xxxM	2-Fiber LC Uniboot/LC Uniboot Single-mode Pretium EDGE Solutions Jumper, OFNR (riser) 2.0 mm interconnect cable, single-mode ultra-bendable fiber (OS2)

Note: "xxx" denotes length in meters. Standard lengths are 001, 003, 005, 007 and 010 meters. Additional lengths and plenum-rated options are available upon request.

Corning Cable Systems LLC • PO Box 489 • Hickory, NC 28603-0489 USA
 800-743-2675 • FAX: 828-901-5973 • International: +1-828-901-5000 • www.corning.com/cablesystems

Corning Cable Systems reserves the right to improve, enhance and modify the features and specifications of Corning Cable Systems products without prior notification. LANscape and Pretium are registered trademarks of Corning Cable Systems Brands, Inc. Plug & Play is a trademark of Corning Cable Systems Brands, Inc. ClearCurve and Corning are registered trademarks of Corning Incorporated. MTP is a registered trademark of USConec, Ltd. All other trademarks are the properties of their respective owners. Corning Cable Systems is ISO 9001 certified. © 2009 Corning Cable Systems. All rights reserved. Published in the USA. LAN-1141-EN / October 2009