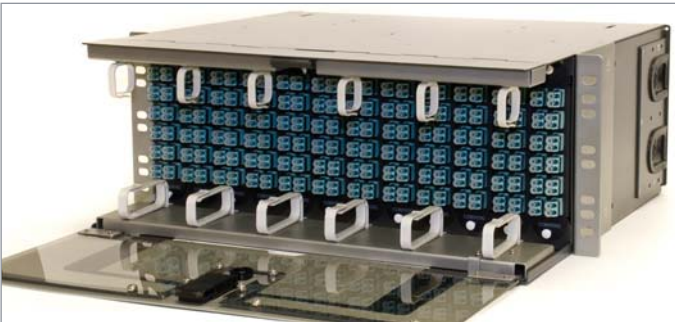
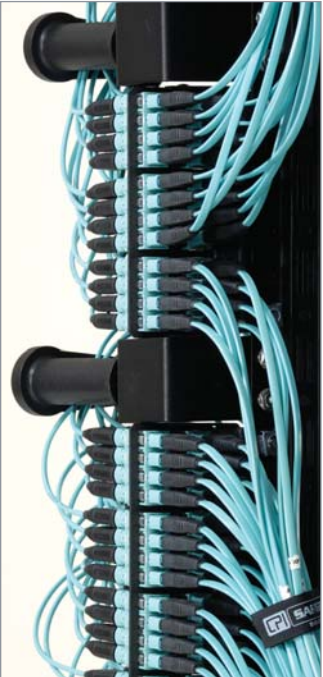
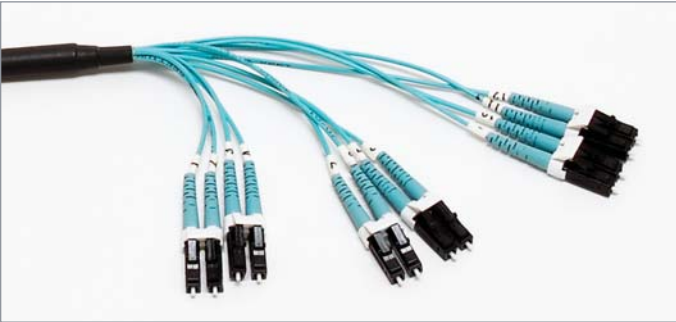


LANscape® Pretium® Integrated Solutions

U-Space and Zero-U Systems



LANscape® Pretium® Integrated Solutions

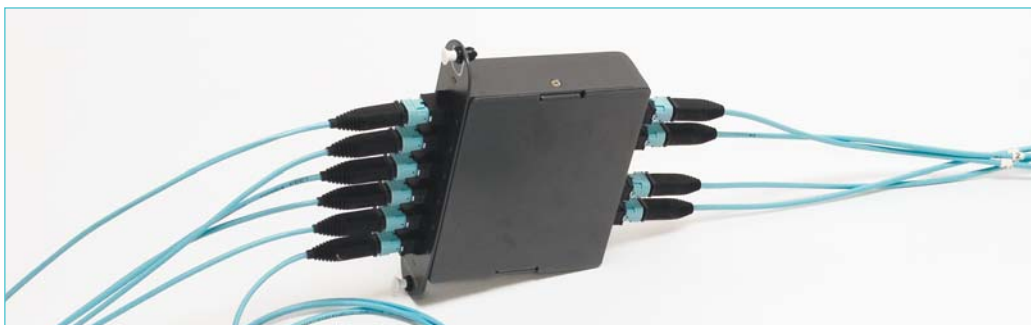
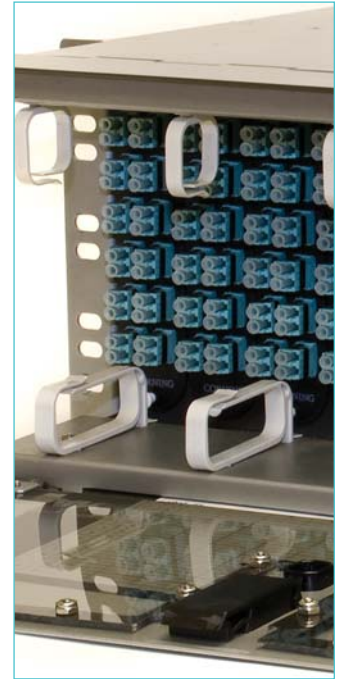
Data center designers face a unique challenge: providing system manageability, flexibility and scalability while also addressing the large volume of optical fiber cabling that must be routed in the cabinets that house large modular switches. Corning Cable Systems' innovative LANscape® Pretium® Integrated Solutions alleviate the design, installation, management, scaling and cooling issues often associated with data center architectures.

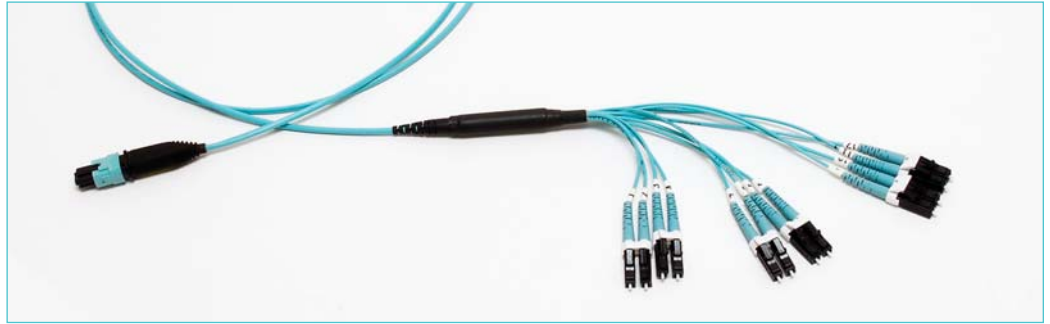
LANscape Pretium Integrated Solutions ensure seamless integration of the data center cabling infrastructure, passive optical hardware, cabinets and electronic components. Whether you have an established cabinet manufacturer and electronics vendor, or a requirement for the amount of rack space your optical infrastructure may consume, LANscape Pretium Integrated Solutions include a product set to meet your needs.

U-Space System

The U-Space System, a complement to Corning Cable Systems Plug & Play™ Universal Systems product family, is a pre-engineered system that maps directly to the line card ports of Brocade and Cisco switches. Designed to facilitate component integration, the U-Space System features customized harnesses that map directly to the line cards. The harnesses are mated to trunk cables via MTP® adapter panels or modules, which are installed in a 4U Pretium Connector Housing mounted above or below the switch.

The U-Space System supports Brocade line cards with port counts ranging from 16 to 48, and 32- to 48-port Cisco line cards. For a Brocade chassis with 16- or 32-port line cards, the product set includes customized 8-fiber harnesses and Corning Cable Systems' Base-8 Module, which transitions 12-fiber MTP connectivity to 8-fiber MTP connectivity. This module eliminates unused or dangling fibers that typically occur when utilizing 12-fiber connectivity for line cards with 8-fiber increments. The 48-port chassis for both Cisco and Brocade utilizes customized 12-fiber harnesses with MTP adapter panels, while Cisco's 32-port chassis utilizes a combination of 4-fiber and 12-fiber harnesses.

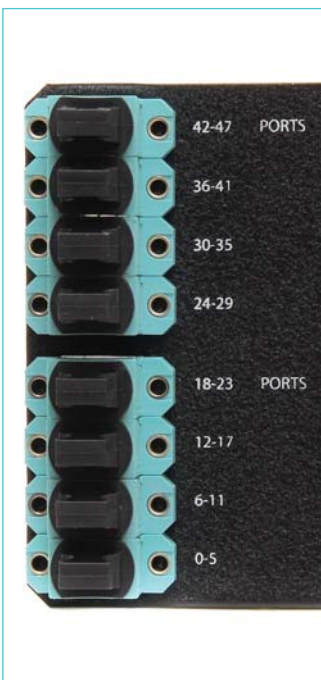




With port mapping from the MDA patch panel to the SAN director or Ethernet switch, the U-Space System simplifies the customer's design process and reduces infrastructure installation time. The high-density trunk cabling and customized harness system reduces cable congestion, promoting air circulation, increasing deployment velocity and improving the manageability of future moves, adds and changes.

Zero-U System

For applications where maximized rack space and innovative trunk cable management is needed or desired, LANscape® Pretium® Integrated Solutions include the Zero-U System. Developed with Chatsworth Products, Inc. (CPI), the system is installed in CPI's TeraFrame™ Cabinets, moving the space required for passive optical patching out of the rack space. The Zero-U System includes components providing zero-U connectivity in both low-port-count and high-port-count applications in the data center.



In high-density applications, instead of utilizing traditional rack-mountable hardware, the Zero-U System includes MTP® bracket(s) mounted into the cabinet's vertical manager to facilitate patching and to provide more room in the cabinet for data center electronics. Customized optical harnesses are designed for easy compatibility and integration with Brocade and Cisco switches. Pre-engineered and optimized routing and management of these harnesses simplifies and improves the initial speed of deployment as well as future moves, adds and changes. As with the U-Space System, the elimination of the bulk cabling in the cabinet vertical manager and modular switch reduces congestion to improve air flow efficiency and a patented port-mapping scheme simplifies network installation and administration.

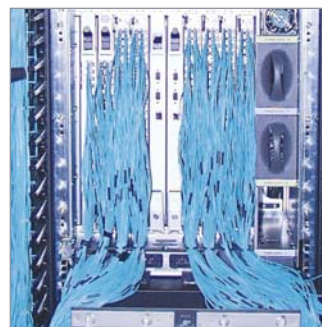


LANscape® Pretium® Integrated Solutions provide:

- Customized solutions for integration with Brocade and Cisco switches
- Innovative port-mapping architecture that streamlines the design, installation and administration of data center infrastructures
- Superior cable management of Plug & Play™ Universal Systems trunks
- Reduced time for infrastructure design and installation
- Simplified administration of moves, adds and changes
- Elimination of 77 percent of the bulk cabling in the cabinet vertical manager and modular switch

Corning Cable Systems LANscape Pretium Integrated Solutions were designed to meet the unique requirements of data center applications. Ensuring the integration of your data center components, the product set simplifies the data center design and installation process, while also providing the flexibility to meet changing customer needs.

Transform your data center infrastructure with LANscape Pretium Integrated Solutions.



BEFORE



AFTER

CORNING

LANscape®
Pretium® Solutions

Corning Cable Systems LLC • PO Box 489 • Hickory, NC 28603-0489 USA
800-743-2675 • FAX: 828-901-5973 • International: +1-828-901-5000 • www.corning.com/cablesystems

Corning Cable Systems reserves the right to improve, enhance and modify the features and specifications of Corning Cable Systems products without prior notification. LANscape and Pretium are registered trademarks of Corning Cable Systems Brands, Inc. Plug & Play is a trademark of Corning Cable Systems Brands, Inc. MTP is a registered trademark of USConec Ltd. CPI is a registered trademark of Chatsworth Products, Inc. TeraFrame is a trademark of Chatsworth Products, Inc. All other trademarks are the properties of their respective owners. Corning Cable Systems is ISO 9001 certified. © 2008, 2009 Corning Cable Systems. All rights reserved. Published in the USA. LAN-914-EN / May 2009